

## Chapter 2 Part 1: Graphing Linear Equations

Unit Title: Futurama

Unit Question: Where am I Going?

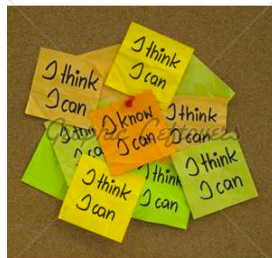
Learner Profile: Reflective

Area of Interaction:  
Health & Social Education



## I Can Statement:

I can recognize a linear equation  
and draw its graph.



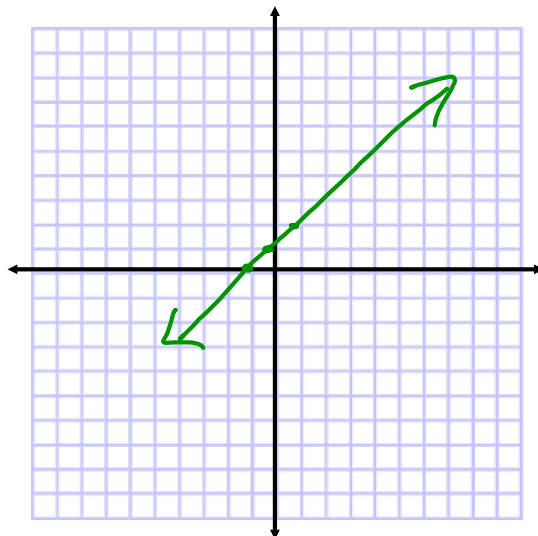
# Vocabulary

**Linear Equation:** an equation whose graph is a line.

**Solutions of a linear equation:** the points on the line that are a solution to the equation.

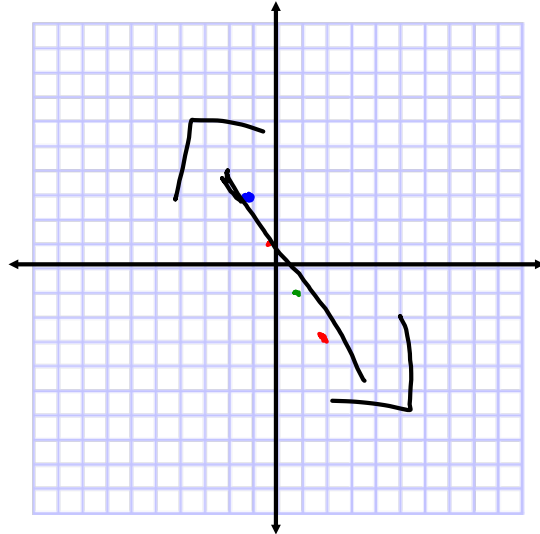
x	y	(x,y)
-1	0	$(-1, 0)$
0	1	$(0, 1)$
1	2	
2		

$$y = x + 1$$



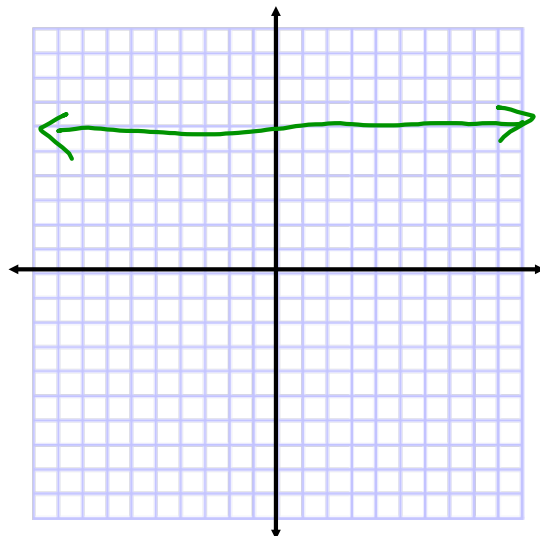
x	y	(x,y)
-1	3	$(-1, 3)$
0	1	$(0, 1)$
1	-1	$(1, -1)$
2	-3	$(2, -3)$

$$y = -2x + 1$$



x	y	(x,y)
-1	6	
0	6	
1	6	
2	6	

$$y = 6$$



## Key Idea:



The graph  $y = a$  is a horizontal line passing through  $(0, a)$

## Real-Life Application:

After college you have a debt of 15,000 dollars. Each month you are able to pay \$100 towards your debt. How many months does it take you to pay off your debt?



Use the equation  $y = 100x - 15,000$  to represent this situation.

*months*

**Assignment:**  
**p.52 #11-24all**

**Due tomorrow at the  
beginning of class!!**